



# Warmer. Faster.

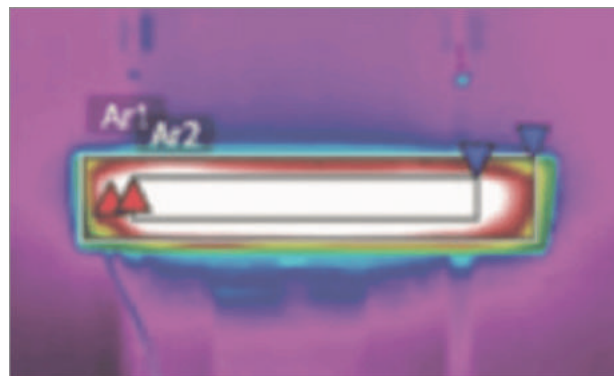
Radiant heat that integrates with any space.

From residential and commercial to healthcare and fitness applications, our Radiant Electric Heat panels with unique CeramiCircuit™ technology can be used alone or integrated with any VRF system layout or HVAC system.

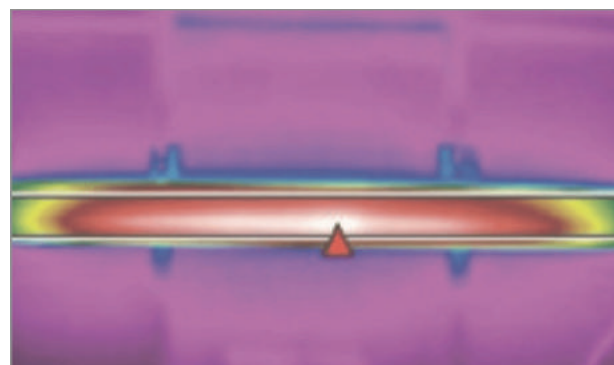


## CERAMICIRCUIT™ VS. THE COMPETITION

CeramiCircuit™ provides superior thermal transfer and storage.



CeramiCircuit™



The Competition

As an example: our 585 watt Model 632C ceramic radiant heat panel with its highly emissive CeramiCircuit™ porcelain-coated carbon steel emitter achieves an average surface temperature of 312.4°F. Factor in a 4.2% larger emitting surface and 2.5% lower electrical draw and it results in a 52% efficiency advantage over competitors—all with a 10-year warranty. The competition's heater, on the other hand, is powered by a 600-watt calrod element, is enclosed in an inexpensive and poorly emissive aluminum emitter, produces an average surface temperature of 219.2°F, and only offers a 1-year warranty.

Our quick-response, clean, quiet, and even heat creates more comfort at lower temperatures for any commercial, institutional, or residential heating application. It can also be used as a supplemental heat source for existing and other specialized heating solutions.



### LAY-IN CEILING:

Our Lay-In Heaters are ideal for any space with drop ceilings or drywall installation using rapid mount frames.

- Featuring CeramiCircuit™ Technology
- Both the 1624CL and 1648CL are available in ceiling white. The 1648CL is also available in black.
- Units work well as supplementary heat or as the primary heat source.
- When compared to competitive units, the panel's nearly 200° higher surface temperature and 67% greater watt output allows for use in demanding applications
- 10-year limited warranty
- Quickly reaches full heating potential in 5–7 minutes



### COVE MOUNT:

For installation on hard surface walls at least 6' up from the floor.

- Featuring CeramiCircuit™ Technology
- Available for installation on hard surface ceilings with optional CL brackets
- Standard colors are white and beige. Black is available as a standard option for the 945 and 1445 models.
- Can be installed as a spot heater to address individual comfort issues and hard to heat spaces or as the primary heat source
- A 52% greater downward radiant output than competitive units allows for use in difficult applications
- 10 Year Limited Warranty
- Quickly reaches full heating potential in 5–7 minutes



### HARD SURFACE CEILING MOUNT OR SUSPENSION:

Designed to be surface mounted or suspended from ceilings 8' or higher. Ideal for most high ceiling installations and high-heat applications such as Hot Yoga.

- Featuring CeramiCircuit™ Technology
- Available for installation on hard surface ceilings with optional CL brackets
- Can be installed as a spot heater to address individual comfort issues and hard to heat spaces or as the primary heat source
- A 52% greater downward radiant output than competitive units allows for use in difficult applications such as hot yoga, vestibules, entryways or spaces with higher ceilings
- 10-year limited warranty
- Quickly reaches full heating potential in 5–7 minutes



## HIGH-INTENSITY HEATERS

The ideal commercial patio heater to replace propane in many applications, including restaurants, outdoor patios and residential pavilions, our high-intensity heaters offer high-quality Italian manufacturing, flexible mounting options and patented reflector that distributes heat wider. Easy, inexpensive bulb changes make for longer unit life and easy maintenance.

Available in four models.



### HELIOS RADIANT TITAN 1:

High-intensity heater for indoor and outdoor installations at high heights, such as industrial spaces and workstations.

- Color: White
- Power: 1500W (120/208v); 2000W (240v)
- IP25 protection rating - rain and splash-proof
- Heated area: 160/215 sq. ft. approx.
- Installation height: 11/15 ft.



### ATEX HEATING:

The only electric explosion-proof radiant product on the market, ATEX is specifically engineered for use in environments where explosive or volatile materials are present, such as gasses, paints, and airborne particulate.

- Color: Cast Iron
- Power: 1500W (120/208v); 2000W (240v)
- IP66 protection rating - operates safely in work areas with potentially explosive atmospheres, identified as ZONE 2 - 22 pursuant to the 2014 directives
- Heavy duty cast iron housing, high temperature impact resistant glass, and inox safety valve
- Liquid, vapor, airborne dust & particle, and weather proof
- Electric radiant product



### HELIOSA 66® BLACK:

Refined look and ideal for indoor or outdoor high intensity infrared heating in restaurants and hospitality, residential patios, or other large open, closed, or semi-closed environments. Optical filter lets heat through and reduces the light intensity found in other heaters.

- Special heat-resistant black safety glass
- Color: Optical black
- Power: 1500W (120/208v); 2000W (240v)
- Heated area: 160/215 sq. ft. approx.
- IPX5 protection rating for outdoor use - rain and splash-proof
- Installation height: 9/10 ft.



### HELIOSA® 66 HIGH-DESIGN:

Commercial grade outdoor heater suited for restaurant, hospitality and residential applications with a sleek look and affordable cost.

- Color: Cast Iron
- Power: 1500W (120/208v); 2000W (240v)
- Heated area: 270/300 sq. ft. approx.
- IPX5 protection rating for outdoor use - rain and splash-proof
- Installation height: 9/10 ft.





## KLIMA UNDERFLOOR HEATING

by Radiant Electric Heat

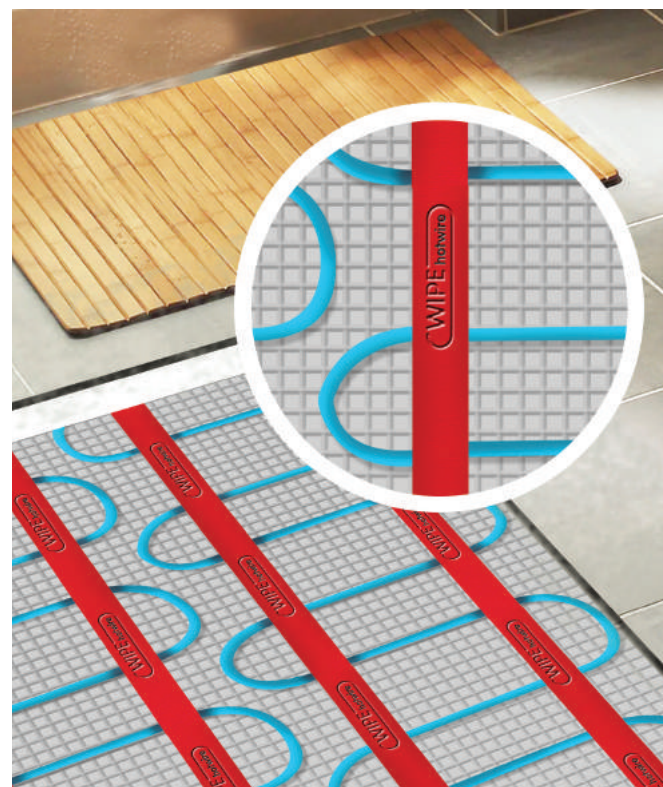
Low-profile radiant electric underfloor heating from a high-quality UK brand with over 20 years of commercial/residential experience. Ideal for commercial and residential applications where even heating is required. Low-profile cable splice means no drilling or chiseling required to install.



## KLIMA HEATING CABLE:

Cable only for customized installations.

- Can be installed embedded in cement floors
- Shape the cable to the spacing you want for the capacity you need
- Secured to floor insulation using aluminum tape and with dove-tail plates or tie-wraps onto the concrete net
- EMC-free 2-conductor cable
- Power supply cable 2.5 metres 3-core
- Unique blind connection between the heating and the connection cable
- 17 watt per meter capacity 230 Volt
- Fully encased in grounded aluminum with PVC protective sheath



## KLIMA UNDERFLOOR HEATING MAT:

Mat and cable in one easy-to-install underfloor heating system.

- Designed to be installed directly on an insulated concrete floor or Thermal board
- 3 mm mat can be laid into a layer of flexible tile adhesive or a compatible self-leveler
- Heating cable is fixed evenly over the fiberglass mesh (inter-loop distance approx. 7cm)
- Standard capacity of 150 W/m<sup>2</sup>
- Fully grounded sheath
- Suitable for wet areas





**CONTACT US TODAY!**

[electricheat.com](http://electricheat.com) | [sales@electricheat.com](mailto:sales@electricheat.com) | 800.774.4450

Copyright © 2022 Radiant Electric Heat