



**Faster warmth,  
indoors or out.**

## **HIGH-INTENSITY HEATERS**

Our high-intensity heaters can be used indoors or out producing instant heat only when needed providing comfort and efficiency.

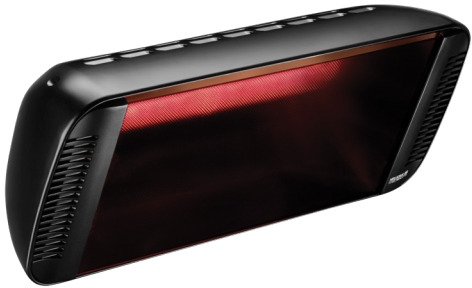




## HIGH-INTENSITY HEATERS

The ideal commercial patio heater to replace propane in many applications, including restaurants, outdoor patios and residential pavilions, our high-intensity heaters offer high-quality Italian manufacturing, flexible mounting options and patented reflector that distributes heat wider. Easy, inexpensive bulb changes make for longer unit life and easy maintenance.

**Available in four models.**



### HELIOSA 66® BLACK:

Refined look and ideal for indoor or outdoor high intensity infrared heating in restaurants and hospitality, residential patios, or other large open, closed, or semi-closed environments. Optical filter lets heat through and reduces the light intensity found in other heaters.

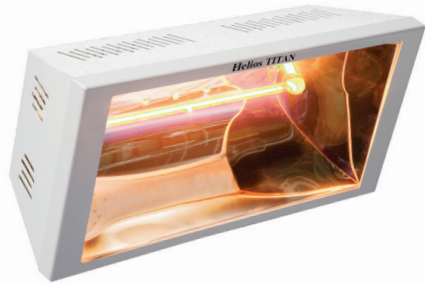
- Special heat-resistant black safety glass
- Color: Optical black
- Power: 1500W (120/208v); 2000W (240v)
- Heated area: 160/215 sq. ft. approx.
- IPX5 protection rating for outdoor use - rain and splash-proof
- Installation height: 9/10 ft.



### HELIOSA® 66 HIGH-DESIGN:

Commercial grade outdoor heater suited for restaurant, hospitality and residential applications with a sleek look and affordable cost.

- Color: Cast Iron
- Power: 1500W (120/208v); 2000W (240v)
- Heated area: 270/300 sq. ft. approx.
- IPX5 protection rating for outdoor use - rain and splash-proof
- Installation height: 9/10 ft.



### HELIOS RADIANT TITAN 1:

High-intensity heater for indoor and outdoor installations at high heights, such as industrial spaces and workstations.

- Color: White
- Power: 1500W (120/208v); 2000W (240v)
- IP25 protection rating - rain and splash-proof
- Heated area: 160/215 sq. ft. approx.
- Installation height: 11/15 ft.



### ATEX HEATING:

The only electric explosion-proof radiant product on the market, ATEX is specifically engineered for use in environments where explosive or volatile materials are present, such as gasses, paints, and airborne particulate.

- Color: Cast Iron
- Power: 1500W (120/208v); 2000W (240v)
- IP66 protection rating - operates safely in work areas with potentially explosive atmospheres, identified as ZONE 2 - 22 pursuant to the 2014 directives
- Heavy Duty Cast Iron Housing, High Temperature Impact Resistant Glass, and Inox Safety Valve
- Liquid, Vapor, Airborne Dust & Particle, and Weather proof

## PRODUCT SPECS

Model	BTU	Watts	Volts	Amps	Heated Area (sq. ft.)	Recommended Mounting Height (ft.)	Optical Filter to Reduce Light Output	Explosion Proof Rating	Dimensions L x W x D (inches)	Shipping Weight (lbs)
Heliosa 66 Black	5150	1500	120	12.5	160	9–10	X	—	20" x 6.5" x 8.5"	8
Heliosa 66 Black	5150	1500	208	7.2	160	9–10	X	—	20" x 6.5" x 8.5"	8
Heliosa 66 Black	6828	2000	240	8.3	215	9–10	X	—	20" x 6.5" x 8.5"	8
Heliosa 66	5150	1500	120	12.5	270	9–10	—	—	20" x 6.5" x 8.5"	8
Heliosa 66	5150	1500	208	7.2	270	9–10	—	—	20" x 6.5" x 8.5"	8
Heliosa 66	6828	2000	240	8.3	300	9–10	—	—	20" x 6.5" x 8.5"	8
Titan 1	5150	1500	120	12.5	160	11–15	—	—	18.5" x 9" x 5"	8
Titan 1	5150	1500	208	7.2	160	11–15	—	—	18.5" x 9" x 5"	8
Titan 1	6828	2000	240	8.3	215	11–15	—	—	18.5" x 9" x 5"	8
ATEX	5150	1500	208	7.2	107	9–10	—	X	18.5" x 9" x 5"	15
ATEX	6828	2000	240	8.3	160	9–10	—	X	18.5" x 9" x 5"	15





**CONTACT US TODAY!**

[electricheat.com](http://electricheat.com) | [sales@electricheat.com](mailto:sales@electricheat.com) | 800.774.4450

Copyright © 2022 Radiant Electric Heat