



**More heat, where
you need it.**

CERAMICIRCUIT™

With an aluminum oxide resistive trace, porcelain coated carbon steel emitter and higher average surface temperature, Ceramicircuit™ leaves the competition out in the cold.



CERAMICIRCUIT™ VS. THE COMPETITION

CeramiCircuit™ provides superior thermal transfer and storage.



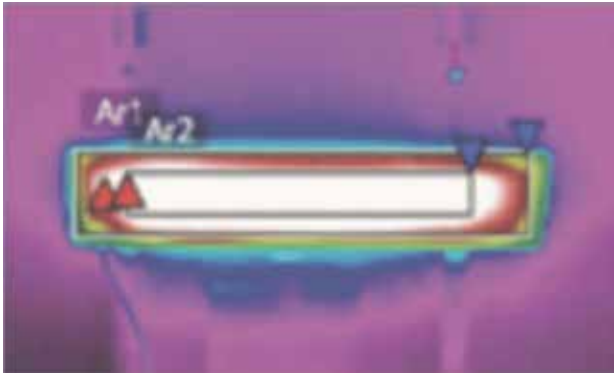
LAY-IN CEILING:

Our Lay-In Heaters are ideal for any space with drop ceilings or drywall installation using rapid mount frames.

- Featuring CeramiCircuit™ Technology
- Both the 1624CL and 1648CL are available in ceiling white. The 1648CL is also available in black.
- Units work well as supplementary heat or as the primary heat source.
- When compared to competitive units, the panel's nearly 200° higher surface temperature and 67% greater watt output allows for use in demanding applications.
- 10-year limited warranty.
- Quickly reaches full heating potential in 5–7 minutes.

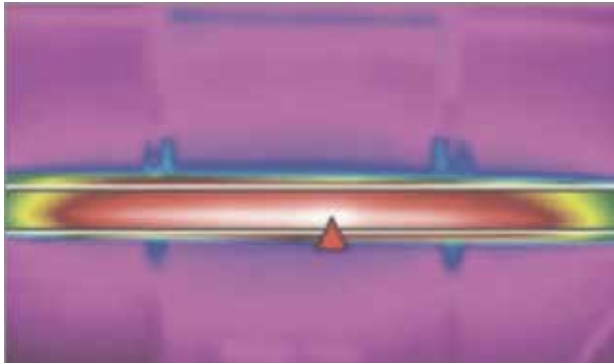
PRODUCT SPECS

Model	BTU	Watts	Volts	Amps	Dimensions L x W x D (inches)	Shipping Weight (lbs)
1624CL	2134	625	120	5.2	24" x 12" x 1.25"	21
1624CL	2134	625	208	3.0	24" x 12" x 1.25"	21
1624CL	2134	625	240	2.6	24" x 12" x 1.25"	21
1624CL	2134	625	277	2.3	24" x 12" x 1.25"	21
1624CL	2134	625	347	1.8	24" x 12" x 1.25"	21
1248CL	2560	750	120	6.3	48" x 12" x 1.25"	21
1248CL	2560	750	208	3.6	48" x 12" x 1.25"	21
1248CL	2560	750	240	3.1	48" x 12" x 1.25"	21
1248CL	2560	750	277	2.7	48" x 12" x 1.25"	21
1248CL	2560	750	347	2.4	48" x 12" x 1.25"	21
1648CL	4265	1250	120	10.4	48" x 24" x 1.25"	38
1648CL	4265	1250	208	6.0	48" x 24" x 1.25"	38
1648CL	4265	1250	240	5.2	48" x 24" x 1.25"	38
1648CL	4265	1250	277	4.6	48" x 24" x 1.25"	38
1648CL	4265	1250	347	3.6	48" x 24" x 1.25"	38



CeramiCircuit™

As an example: our 585 watt Model 632C ceramic radiant heat panel with its highly emissive CeramiCircuit™ porcelain-coated carbon steel emitter achieves an average surface temperature of 312.4°F. Factor in a 4.2% larger emitting surface and 2.5% lower electrical draw and it results in a 52% efficiency advantage over competitors—all with a 10-year warranty. The competition's heater, on the other hand, is powered by a 600-watt calrod element, is enclosed in an inexpensive and poorly emissive aluminum emitter, produces an average surface temperature of 219.2°F, and only offers a 1-year warranty.



The Competition

Our quick-response, clean, quiet, and even heat creates more comfort at lower temperatures for any commercial, institutional, or residential heating application. It can also be used as a supplemental heat source for existing and other specialized heating solutions.



COVE MOUNT:

For installation on hard surface walls at least 6' up from the floor.

- Featuring CeramiCircuit™ Technology
- Available for installation on hard surface ceilings with optional CL brackets.
- Standard colors are white and beige. Black is available as a standard option for the 945 and 1445 models.
- Can be installed as a spot heater to address individual comfort issues and hard to heat spaces or as the primary heat source.
- A 52% greater downward radiant output than competitive units allows for use in difficult applications.
- 10 Year Limited Warranty.
- Quickly reaches full heating potential in 5–7 minutes.

PRODUCT SPECS

Model	BTU	Watts	Volts	Amps	Dimensions L x W x D (inches)	Shipping Weight (lbs)
632C	1989	585	120	4.8	33" x 7" x 1.125"	11
632C	1989	585	208	2.9	33" x 7" x 1.125"	11
632C	1989	585	240	2.4	33" x 7" x 1.125"	11
632C	1989	585	277	2.2	33" x 7" x 1.125"	11
632C	1989	585	347	1.7	33" x 7" x 1.125"	11
645C	2817	825	120	6.8	46" x 7" x 1.125"	15
645C	2817	825	208	3.9	46" x 7" x 1.125"	15
645C	2817	825	240	3.4	46" x 7" x 1.125"	15
645C	2817	825	277	2.9	46" x 7" x 1.125"	15
645C	2817	825	347	2.4	46" x 7" x 1.125"	15
945C	3414	1000	120	8.3	46" x 10" x 1.125"	20
945C	3414	1000	208	4.8	46" x 10" x 1.125"	20
945C	3414	1000	240	4.2	46" x 10" x 1.125"	20
945C	3414	1000	277	3.6	46" x 10" x 1.125"	20
945C	3414	1000	347	2.9	46" x 10" x 1.125"	20
1445C	5150	1500	120	12.5	46" x 15" x 1.125"	28
1445C	5150	1500	208	7.2	46" x 15" x 1.125"	28
1445C	5150	1500	240	6.2	46" x 15" x 1.125"	28
1445C	5150	1500	277	5.4	46" x 15" x 1.125"	28
1445C	5150	1500	347	4.3	46" x 15" x 1.125"	28



HARD SURFACE CEILING MOUNT OR SUSPENSION:

Designed to be surface mounted or suspended from ceilings 8' or higher. Ideal for most high ceiling installations and high-heat applications such as Hot Yoga.

- Featuring CeramiCircuit™ Technology
- Available for installation on hard surface ceilings with optional CL brackets.
- Can be installed as a spot heater to address individual comfort issues and hard to heat spaces or as the primary heat source.
- A 52% greater downward radiant output than competitive units allows for use in difficult applications such as hot yoga, vestibules, entryways or spaces with higher ceilings.
- 10-year limited warranty.
- Quickly reaches full heating potential in 5–7 minutes.

PRODUCT SPECS

Model	BTU	Watts	Volts	Amps	Dimensions L x W x D (inches)	Shipping Weight (lbs)
632CL	1989	585	120	4.8	33" x 7" x 1.125"	11
632CL	1989	585	208	2.9	33" x 7" x 1.125"	11
632CL	1989	585	240	2.4	33" x 7" x 1.125"	11
632CL	1989	585	277	2.2	33" x 7" x 1.125"	11
632CL	1989	585	347	1.7	33" x 7" x 1.125"	11
645CL	2817	825	120	6.8	46" x 7" x 1.125"	15
645CL	2817	825	208	3.9	46" x 7" x 1.125"	15
645CL	2817	825	240	3.4	46" x 7" x 1.125"	15
645CL	2817	825	277	2.9	46" x 7" x 1.125"	15
645CL	2817	825	347	2.4	46" x 7" x 1.125"	15
945CL	3414	1000	120	8.3	46" x 10" x 1.125"	20
945CL	3414	1000	208	4.8	46" x 10" x 1.125"	20
945CL	3414	1000	240	4.2	46" x 10" x 1.125"	20
945CL	3414	1000	277	3.6	46" x 10" x 1.125"	20
945CL	3414	1000	347	2.9	46" x 10" x 1.125"	20
1445CL	5150	1500	120	12.5	46" x 15" x 1.125"	28
1445CL	5150	1500	208	7.2	46" x 15" x 1.125"	28
1445CL	5150	1500	240	6.2	46" x 15" x 1.125"	28
1445CL	5150	1500	277	5.4	46" x 15" x 1.125"	28
1445CL	5150	1500	347	4.3	46" x 15" x 1.125"	28



CONTACT US TODAY!

electricheat.com | sales@electricheat.com | 800.774.4450

Copyright © 2022 Radiant Electric Heat