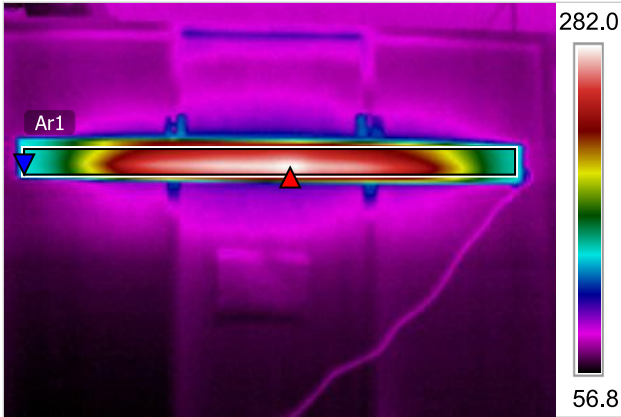


Calrod heating element behind an aluminum plate
600 Watt heater after 10 minutes of operation

1/16/2013 4:44:16 PM



IR_0264.jpg

Measurements °F

Ar1	Max	282.5
	Min	106.8
	Average	219.2

Parameters

Emissivity	0.95
Refl. temp.	68 °F

CeramiCircuit heating element bound to a porcelain plate
585 Watt heater after 10 minutes of operation

1/29/2013 11:05:07 AM



IR_0296.jpg

Measurements °F

Ar1	Max	302.4
	Min	110.7
	Average	281.2
Ar2	Max	302.4
	Min	296.9
	Average	302.4

Parameters

Emissivity	0.95
Refl. temp.	68 °F

The CeramiCircuit heater (right) is able to achieve higher operating temperatures, more consistent temperatures, and a greater heated area than cove heaters with calrod construction. And it does this while using less power.